



Monte Carlo LS Coupe



Monte Carlo Z34 Coupe

WHAT MONTE CARLO IS ...

Chevrolet Monte Carlo, the retail sales leader in the midsize coupe segment, is truly a dual personality vehicle. On the one hand, there's the LS model — refined, classic and contemporary. It's a personal statement of luxury for its owners. On the other hand, there's Z34 ... bred for more sporty driving and inspired by its wilder cousin who competes on the NASCAR Winston Cup circuit. One name ... many shared features ... two personalities. As a result, Chevrolet defines Monte Carlo as "classy with a wild streak" ... an appropriate definition for many reasons.

Monte Carlo offers a lot of class — thanks to available features like the OnStar system, driver and front-passenger temperature controls, leather wrapped steering wheel with radio controls, power sliding sunroof, Remote Keyless

Entry and leather-accented bucket seats.

And, the list goes on. The LS model is impressively equipped with a standard anti-lock brake system, theft-deterrent system and power windows and locks ... and for that wild streak, a 3100 V6 SFI engine with 160 horsepower.

Showing off that wild side even more is the Monte Carlo Z34. New to Z34 this year is the 3800 Series II V6 SFI engine that pumps out an impressive 200 horsepower. The 3800 has a long, distinguished history powering some of GM's luxury and sporty models. And, it proved it belongs in the Monte Carlo line last summer, when it debuted in the Z34 Pace Car at the 1997 Brickyard 400®.

It's classy in LS ... it's wild in Z34 ... and it's impressive on the track. No wonder Monte Carlo is the car more NASCAR Winston Cup champions trust.

Monte Carlo Models

- LS Coupe
- Z34 Coupe.



What's New For 1998:

- Revised Daytime Running Lamp system (page 3)
- Optional dealer installed OnStar system introduces mobile communications to Monte Carlo drivers (page 4)
- New shade of Medium Gray interior color (page 6)
- Rear decklid spoiler available on all models (page 6)
- Four new exterior colors — Light Pewter Metallic, Medium Regal Blue Metallic, Navy Blue Metallic and Light Driftwood Metallic (page 7)
- 3800 Series II V6 (L36) engine replaces 3.4L (LQ1) on Z34 models (page 8)
- Electronic control converter clutch on all models (page 10)
- Front 4-stage strut valving on Ride and Handling Suspension (page 11)
- Larger stabilizer bar on Soft-Ride Suspension (page 11)
- Machine-faced 16-inch aluminum wheels, standard on Z34 (page 12).

Competitors

Monte Carlo competitors in the midsize coupe segment are:

- Chrysler Sebring
- Dodge Avenger.



1998 Monte Carlo

1997 Awards

- *SmartMoney* — Best Midsize Two-Door Buy
- *Kiplinger's Personal Finance Magazine 1997 Car Buying Guide* — Best for Safety, Passenger Cars Between \$13,000–\$18,000.

Demographics

- Age range of Monte Carlo LS and Z34 buyers is Mid-20s to Mid-50s
- Average household income is \$55,000
- 57 percent of LS drivers are women
- 52 percent of Z34 drivers are men
- 65 percent of buyers are married
- 34 percent of Monte Carlo buyers are college graduates
- Many Monte Carlo buyers are NASCAR enthusiasts.

MODELS AND TRIM LEVELS

Two models comprise the 1998 Chevrolet Monte Carlo line — LS Coupe and Z34 Coupe.

Monte Carlo LS Coupe

LS Coupe offers a long list of standard features that make it an outstanding value, such as:

- 3100 V6 engine with 160 horsepower
- Electronically controlled 4-speed automatic Overdrive transmission (4T60-E)
- 4-wheel anti-lock brake system (ABS)
- Power front disc/rear drum brakes
- Power rack-and-pinion steering
- 4-wheel independent suspension
- 100,000-mile platinum-tip spark plugs*
- 150,000-mile extended-life engine coolant*
- Sealed-for-life transmission*
- Change Oil Soon indicator
- Low engine oil and coolant level warning lights
- Dual body-color electric remote sport mirrors
- Color-keyed body-side moldings
- Two-side-galvanized steel — all panels, except roof
- Stainless-steel exhaust system
- Custom Cloth 60/40 split-bench front seat with center storage armrest
- Six-passenger seating
- OnStar communications system wiring accommodations
- Air conditioning with CFC-free refrigerant
- Power door locks
- Power windows with driver's Express-Down feature
- Tinted Solar-Ray windshield and rear glass
- Electronically tuned AM/FM stereo with cassette player, automatic tone control, speed-compensated volume and TheftLock security feature
- Theatre lighting
- Battery-rundown protection
- Daytime Running Lamps with Automatic Exterior Lamp Control
- Headlamps-on reminder tone

- Driver and front-passenger air bags
- Rear-seat safety belt child comfort guides
- Rear-seat heat ducts
- Split-folding rear seat
- PASS-Key II theft-deterrent system
- Tilt-Wheel™ Adjustable Steering Column
- Gauge package with tachometer
- Intermittent windshield wiper system
- Side-window defoggers
- Visor mirrors, left-hand and illuminated right-hand
- Front-door storage compartments
- Two cup holders (with 60/40 front seat)
- Scotchgard™ Protector
- Carpeted front and rear floor mats
- 15-inch wheels with bolt-on wheel covers
- P205/70R-15 blackwall Touring tires.

**Maintenance needs vary with different uses and driving conditions.*

Monte Carlo Z34 Coupe

Z34 Coupe offers the same standard features as LS Coupe, plus the following:

- 3800 Series II V6 engine with 200 horsepower
- Electronically controlled 4-speed automatic Overdrive transmission (4T65-E)
- Power 4-wheel disc anti-lock brake system
- Ride and Handling Suspension
- Dual tailpipes
- Driver and front passenger temperature controls
- Electronic speed control with Resume Speed
- Luggage-area convenience net
- Power trunk opener
- Remote Keyless Entry System
- Custom Cloth front bucket seats with center storage console
- Steering-wheel radio controls with leather-wrapped steering wheel
- 16-inch five-spoke machine-faced aluminum wheels
- P225/60R-16 blackwall Goodyear Eagle RS-A tires.



SAFETY

With a long history of setting automotive safety milestones, GM is a world leader in safety research, development and testing. The 1998 Monte Carlo exemplifies that dedication. And, with a comprehensive system, emphasizing crash avoidance and occupant protection, it's no wonder why Monte Carlo was named "Best for Safety" for "Passenger Cars Between \$13,000 and \$18,000" in *Kiplinger's Personal Finance Magazine 1997 Car Buying Guide*.

Crash-Avoidance Features



- **Daytime Running Lamps (DRL)** operate automatically when the ignition is in the "On" position, increasing Monte

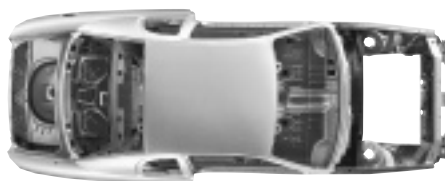
Carlo visibility to other drivers during daylight hours. The system also includes Automatic Exterior Lamp Control, which automatically brings the headlamps to full intensity at dusk and at night. To help increase headlamp longevity, all 1998 Monte Carlo models have a revised Daytime Running Lamp system that, when activated, runs the high-beam lamps at a reduced intensity, instead of the low-beam lamps.

- **4-wheel anti-lock brake system (ABS)**, standard on LS and Z34 models, automatically adjusts brake pressure to the front and rear wheels during hard braking situations, minimizing wheel lockup and helping the driver maintain steering control. The driver just needs to keep firm pressure down on the brake pedal.
- **Brake/transmission shift interlock**, standard on all models, requires the driver to depress the brake pedal to shift out of Park.

Occupant-Protection Features

Monte Carlo is designed to help protect owners with a comprehensive safety package. Standard occupant protection features include:

- **Driver and front-passenger air bags**, which are designed to supplement safety belts and help restrain front-seat occupants in the event of a moderate to severe frontal impact
- A **three-point safety belt system**, which helps restrain outboard passengers by distributing forces to help minimize injury
- **Rear-seat safety belt child comfort guides**, which adjust the angle of safety belt crossover, making wearing safety belts more comfortable for children and small adults riding in the backseat
- Adjustable front **shoulder safety belt guide loops**, which offer several positions for optimum safety belt comfort



- **Reinforced steel safety-cage construction** that surrounds occupants with a cocoon-like system of structural components. This structure consists of reinforced roof rails, door pillars and side-door beams, which are designed to minimize intrusion into the passenger compartment
- **Front and rear crush zones**, which are designed to deform in a controlled manner in a collision to absorb impact energy in order to reduce intrusion into the passenger compartment
- An **energy-absorbing steering column and instrument panel**, which are designed to absorb collision impact to help reduce injury to the driver's body
- **Laminated windshield safety glass** and tempered side and rear safety glass that help prevent occupant injury and reduce the risk of occupant ejection in the event of a collision.

Monte Carlo Turns My Headlights On For Me? That's Cool.

Ever noticed other drivers who've forgotten to turn their headlights on when leaving a restaurant or shopping mall at night? Well, it's easy to do, especially since many public areas are well-lit after dark. Unfortunately, if drivers do forget it can be quite dangerous, as it may be hard for oncoming drivers to notice the vehicle. But, there's nothing to worry about if they drive a Monte Carlo — its got a classy feature that ensures owners won't be driving around in the dark without their headlamps turned on.

All Monte Carlo models feature Daytime Running Lamps with Automatic Exterior Lamp Control. With this feature, a light sensor automatically triggers the headlamps to turn on at full intensity, as well as the interior dash lights and all exterior lamps, when it's dark outside. And, when it's light outside, the system switches the headlamps from full intensity to DRL mode, and all other lamps are turned off.

Automatic Exterior Lamp Control is just one more convenience that also contributes to overall safety.



Someone To Watch Over Me

With cellular phones and roadside assistance common in most new cars, what do drivers need to worry about? How about locking the keys inside the vehicle, or — heaven forbid — getting into an accident in an unfamiliar area? There is a solution ... OnStar.

The available OnStar system not only provides a cellular phone, but someone to call. And, the friendly folks at the OnStar Center can help drivers who are lost. That's because the OnStar system uses Global Positioning System satellite technology to pinpoint the vehicle's exact location. Couple that with the ability to detect when the vehicle's air bags deploy, and the OnStar Center can not only dispatch emergency personnel, but also give them the location — vitally important when seconds count.

A few more of the amazing things the OnStar system can do:

- Unlock the vehicle's doors remotely
- Track the vehicle once it's reported stolen
- Provide the driver with the location of the nearest ATM, florist, hotel or whatever is needed.

OnStar — the ultimate way to customize your personal space. No wonder it's available as a dealer-installed option on the 1998 Monte Carlo.

SAFETY (contd)

Theft-Deterrent Features

- **PASS-Key II theft-deterrent system**, which allows the ignition system to be activated only when the computer reads the resistance pellet on the key, is standard on all models. This means only the specially coded key starts each Monte Carlo.
- **Remote hood release** is standard on all Monte Carlo models and helps prevent unauthorized access to the engine compartment.
- **Laser-etched Vehicle Identification Number (VIN) plate** makes forgery more difficult than with stamped VIN plates.
- **Theft-deterrent steering column lock** is standard to prevent the steering wheel from being turned when the key is out of the ignition.

MONTE CARLO INTERIOR FEATURES

Monte Carlo was designed to combine luxury with practicality. And, Monte Carlo is also one of the roomiest coupes available with standard seating for as many as six passengers and 15.5 cubic feet of luggage capacity. The spacious interior also features:

- A standard **60/40 split-bench front seat** with full foam construction that allows comfortable seating for six passengers. It includes the added convenience of a center armrest with fold-out cup holder and storage compartment. Models equipped with this seat configuration also feature a pull-out cup holder in the instrument panel
- Standard **air conditioning** with CFC-free refrigerant, which does not contribute to ozone depletion. The air conditioning compressor is automatically activated to prevent window "flash fogging" when the defrost mode is selected
- Standard **power door locks** that secure both doors at a touch of a button
- Standard **battery-rundown protection**, which automatically shuts off interior

lights, in case they are accidentally left on, after Monte Carlo has been sitting with the engine off for 10 minutes. And, if Monte Carlo is left with the ignition off for more than 24 days, the system cuts power to accessories such as the clock and audio system settings, helping prevent battery rundown

- A standard **Change Oil Soon indicator** that illuminates when it's time to change the oil. This system also is sensitive to driving habits and conditions. Therefore, the light may come on as early as 2,000 miles or less in harsh driving conditions
- Standard **theatre lighting**, which slowly dims interior lights after the doors are closed (instead of shutting off abruptly)
- Standard **auxiliary lighting**, which includes dome, dual reading, glove box and trunk lights for convenience
- A standard **split-folding rear seat** with trunk pass-through feature, which provides cargo-carrying flexibility
- Standard **integrated rear-seat heat ducts** to maximize rear-passenger comfort
- Standard **rear-seat safety belt child comfort guides** (page 3)
- Standard **intermittent windshield wipers**, which allow the driver to match wiper speed with weather conditions for optimum visibility
- A standard **Tilt-Wheel™ Adjustable Steering Column**, which helps tailor the wheel to the most comfortable, individualized driving position
- Standard **Scotchgard™ Protector**, which helps protect cloth seating surfaces, carpeting and door panel trim from stains and makes cleanups easy
- An optional **OnStar Communications System** (wiring accommodations included on both models), which gives 24 hour access to the most comprehensive and user-friendly communications service developed to date for the automobile industry — all through the dealer-installed OnStar cellular phone system





INTERIOR FEATURES (contd)



- **Remote Keyless Entry** (standard on Z34 and optional on LS models), which transmits a uniquely coded, high-frequency radio signal to lock or unlock doors and unlock the trunk from 30 feet away (Remote Keyless Entry shown is for representation only)
- **Driver and front-passenger temperature controls** (standard on Z34 and optional on LS models), which allow the driver and front passenger to vary temperature levels to suit individual tastes
- **Steering wheel radio controls** (standard on Z34 and optional on LS models) that feature Play, Mute, Volume, Seek, AM/FM and Preset buttons for convenience at the fingertips. This feature also includes a leather-wrapped steering wheel
- An optional deep-tinted **power sliding sunroof** with vent feature opens at the touch of a button and includes a sunshade to protect the vehicle's interior from sun fading
- Standard **power windows** for added convenience; the driver's Express-Down feature allows lowering of the driver window by a single touch
- An optional **6-way power driver seat**, which allows precise seat adjustment for maximum comfort
- **Electronic speed control with Resume Speed** (standard on Z34 and optional on LS models), which also includes Accelerate/Coast controls
- An optional **rear-window defogger** that clears the rear window quickly and easily
- Standard **side-window defoggers** to

- ensure a clear view of the road through the driver and passenger windows
- A **center console** (standard on Z34 and optional on LS models), which houses a cup holder, driver or passenger armrest and storage area for tapes, important papers, etc.
- A **luggage-area convenience net** (standard on Z34 and optional on LS models), which helps secure groceries and other small cargo from sliding around in the trunk
- Standard **covered visor mirrors** for both the driver and front passenger. And, the front-passenger mirror illuminates for nighttime convenience
- **Radio and HVAC controls**, which are easy to reach and operate, even while wearing gloves
- A spacious **glove box** that has room for more than the vehicle's owner's manual
- **Front-door storage compartments and seatback storage pockets**, which easily hold maps or other small personal items
- A **jack stowage tray** that eliminates rattles and facilitates spare-tire changes
- **Carpeted front and rear floor mats and full trunk carpeting** that are standard on both models.

Audio Systems

Whatever their musical taste may be, Monte Carlo offers buyers a sound system with the technology and features designed to complement all varieties of music, from jazz to country and in-between.

Available Systems On Monte Carlo:

- An **electronically tuned AM/FM stereo with cassette player, TheftLock security feature**, speed-compensated volume, automatic tone control, seek-scan and digital clock is standard on LS and Z34 models. It includes premium coaxial front and rear speakers
- An **electronically tuned AM/FM stereo with compact disc player, TheftLock security feature**, speed-compensated

Huh? What? I Can't Hear It.

Monte Carlo owners with **uplevel cassette or compact disc player audio systems will never have to fiddle with their volume controls again** — as long as they take advantage of the speed-compensated volume, which automatically adjusts the audio level to make up for road and wind noise while driving.

Here's how it works. Just set the volume at the desired level and adjust the control ring, located behind the volume knob, by turning it clockwise to set the speed-compensated volume. Then, while driving, the volume will automatically increase or decrease, as necessary, overcoming distracting road noise. So, in effect, the volume level will always sound the same whether driving down a residential street or the highway.

And, if used in conjunction with optional steering wheel radio controls, drivers may never have to touch their stereo again. Just another example of how Monte Carlo offers its owners a touch of class.



1998 Monte Carlo

Whistle While They Drive ...

Whistling may make work seem more pleasurable. But to have a vehicle's antenna whistle while driving may be nothing short of annoying.

That's why engineers went so far as to study the noises generated by a radio antenna, due to wind. The result — a fixed-mast antenna that's wire-wrapped in a spiral fashion. This subtle design reduces any wind disturbances created by the antenna that can generate a "whistling" sound.

So, Monte Carlo owners can go ahead and whistle while they drive. And, they won't have to worry about any competition from their antenna.

I Know There's A Ball Around Here Somewhere ...

But, it's not in the corner of the trunk or under the front passenger seat. That's because it's in the fuel filler neck.

As a small plastic ball rises with the fuel level, it prevents owners from splashing fuel back on their hands, clothes and shoes. So, as long as they own Monte Carlo, owners don't have to worry about the smell of gasoline overcoming that expensive department store cologne or perfume.

But, if they run out of balls during a friendly game of table tennis, we don't recommend using this one.

INTERIOR FEATURES (contd)

volume, automatic tone control and digital clock is optional on LS and Z34 models. It includes premium coaxial front and rear speakers.

Uplevel cassette and compact disc player systems feature:

- **Speed-compensated volume**, which automatically regulates the volume of the audio to overcome road noise, so the volume level adjusts to the vehicle's speed
- **Automatic tone control**, which allows the listener to choose preset bass and treble settings designed for classical, news, rock, pop, country/western and jazz stations
- **TheftLock security feature**, which helps prevent theft by making the unit non-functional if removed from the dash
- Available **steering wheel radio controls** that feature Play, Mute, Seek, AM/FM and Preset buttons for added convenience.

Seats

All Monte Carlo front seats provide manual four-way seat adjusters and adjustable head restraints for optimum comfort. And, for more precise seat adjustment, a **6-way power driver seat** is available on both models.

Monte Carlo LS fabric and upholstery in uplevel interiors have refined "French-stitched" seams for a clean and contemporary appearance.



LS Coupe

- Custom Cloth 60/40 split-bench front seat with center storage armrest and cup holder (standard on LS Coupe).



LS Coupe, Z34 Coupe

- Custom Cloth front bucket seats with storage console and cup holder (optional on LS Coupe, standard on Z34).



LS Coupe, Z34 Coupe

- Front bucket seats with Leather seating surfaces, center storage console and cup holder (optional on LS and Z34 Coupes).

Interior Cloth/Custom Cloth Colors

- Medium Gray
- Graphite
- Neutral
- Medium Blue.

Interior Leather Seating Accent Colors

- Graphite
- Neutral.

MONTE CARLO EXTERIOR FEATURES

Monte Carlo has an aerodynamic, yet contemporary-style exterior with an aggressive profile that features flush-mounted front and rear glass, providing optimal visibility.

The Monte Carlo exterior also features:



- An optional **rear decklid spoiler**, which adds to the aggressive, sporty look



EXTERIOR FEATURES (contd)

- Standard body-color electric remote **sport outside rearview mirrors**
- Standard **composite halogen headlamps** that provide a high level of illumination
- A standard **wire-wrapped radio antenna** that reduces wind noise
- A **16.6-gallon fuel tank**, which allows an extended cruising range between fill-ups
- An **easy-open gas cap** that is spring-loaded for quick opening and closing. It also creates a tight vacuum seal and works with the Enhanced Evaporative Emissions Control system, part of OBD II
- **Fuel splash-back protection**, which is provided by a small plastic ball in the filler neck tube that rises with the fuel level in the tank, while being filled
- A **stainless-steel exhaust system**, which includes pipes, catalytic converter and muffler, that resists corrosion and reduces long-term cost of ownership
- **Corrosion protection**, which has been incorporated throughout the vehicle. All exterior panels, except the roof, use **two-side-galvanized steel**.

Exterior Paint

Standard basecoat/clearcoat paint on Monte Carlo resists fading and provides a high-gloss shine for long-lasting exterior beauty. The clearcoat system is formulated to minimize the effects of acid rain and other environmental damage. Clearcoat finish is used with all colors — solids and metallics. The paint process builds up six layers of protection on every new Monte Carlo.

- A **glossy, water-based highlighting solution** is applied to all exterior surfaces to reveal any imperfections before the body is painted.

- A total immersion phosphate electrode position (ELPO) process applies the first layer of primer/paint. Electric voltage is applied to the bodies while submerged in the paint bath to ensure complete coverage, even in hard-to-reach areas.



Exterior Colors

New Paint Color For '98:

- Medium Regal Blue Metallic
 - Navy Blue Metallic
 - Light Driftwood Metallic.
 - Light Pewter Metallic
- Other Colors:**
- Black
 - Dark Jade Green Metallic
 - Deep Purple Metallic
 - Dark Carmine Red Metallic
 - Torch Red
 - Bright White.

DESIGN AND MANUFACTURING

Prior to the introduction of the new body style in the 1995 model year, Monte Carlo and its sedan counterpart, Lumina, had the most extensive pre-launch research conducted for new Chevrolet models up to that time. And, the Monte Carlo design was driven by feedback from that research.

For instance, through a host of customer clinics, more than 2,000 people provided input in focus groups regarding their concerns about safety, comfort and convenience, styling, price and value.

Chevrolet dealers also had a hand in the design process. In fact, 120 changes were made to the original design due to input from dealer advisory groups and customers.

As a result, Monte Carlo is designed, inside and out, to meet the needs of midsize coupe buyers. And, that design is carried through the manufacturing process at the General Motors assembly plant in Oshawa, Ontario, Canada.

Air Bag Safety — Buckle Up Everyone! Children In Back!

There's been a lot of controversy regarding air bag safety. To help owners with air bag safety, Chevrolet developed these guidelines:

- Infants in rear-facing child safety seats should never ride in the front seat of a vehicle with an activated passenger air bag.
- Small children should ride in a child safety seat approved for their age and size, which should be located in the center of the vehicle's rear seat.
- Review the vehicle's owner's manual and the instructions provided with the child safety seat for correct use information.
- Children 12 and under should ride buckled up in a rear seat.
- Everyone should buckle up with both lap and shoulder belts on every trip.
- Driver and front-passenger seats should be moved as far back as practical.
- Never place an object in the air bag deployment zone.



3100 V6 ... The Engine With A Heart

All Monte Carlo LS models are equipped with the 3100 V6 engine, the engine with a heart — a torque axis engine mount system.

This powertrain mounting design provides excellent isolation characteristics as it separates the powertrain's rigid body frequencies from the suspension and vehicle's body.

The "heart of the system" consists of two fluid-filled engine and transmission mounts. Each mount features an environment-friendly hydraulic fluid that "absorbs" or "dampens" movements and engine vibrations. The result — virtually unnoticeable idle, low engine noise, minimal engine shaking and overall smooth ride quality.

BODY STRUCTURE

The Monte Carlo body structure is solid and designed to have a quiet interior that minimizes squeaks and rattles. Helping achieve those effects are:

- Five lateral **cross members** that provide structural support and rigidity
- A **hydro-formed cross-car beam** that serves as the backbone of the instrument panel
- A cloth-covered **fiberglass headliner** with excellent sound-absorbing qualities
- **Sandwich-steel construction** (metal/plastic/metal) throughout the body and interior structure
- **Noise-control patches**, between the passenger and engine compartments, help keep engine noise from entering the interior.

ENGINES



3100 V6 SFI Engine (L82)

All Monte Carlo LS models are equipped with a standard 60-degree 3100 V6 engine with **Sequential Fuel Injection (SFI)**. SFI delivers precise amounts of fuel through injectors at each cylinder, providing maximum fuel efficiency, quick start-ups in all weather conditions and smooth acceleration.

Power ratings for the 3100 V6 are:

- 160 horsepower at 5200 rpm
- 185 lb.-ft. torque at 4000 rpm.

3100 V6 Engine Features

The 3100 offers a variety of features that contribute to its quiet, dependable and long-lasting operation, such as:

- A **torque axis engine mount system**, the heart of which consists of two fluid-filled engine and transmission mounts that "absorb" or "dampen" engine vibrations, contributing to a solid, stable ride with low engine noise and virtually unnoticeable idle
- **On-Board Diagnostics Second Generation (OBD II)** that is combined with the **Powertrain Control Module (PCM)** to monitor fuel delivery, ignition timing and the emissions system, detecting deterioration or malfunction (page 9)
- A **Change Oil Soon indicator** (page 4)
- **Roller rocker arms** that act as roller bearings to minimize noise and friction between camshaft lobes and contacting surfaces of the rocker arms
- A **mass airflow sensor** that renders precise air metering and control of the air-to-fuel ratio
- A "**high-resolution**" **24 X ignition system** that produces a fast ignition and smooth idle
- An "**assembled**" **camshaft**, which is made up of individual lobes permanently locked onto a weight-saving tube, yielding a stable idle and impressive durability
- A die-cast aluminum **structural oil pan**, which is "cross-bolted" to the main bearing caps like a race car engine, supplying added strength and rigidity while reducing noise
- **Oil level and coolant sensors**, which alert the driver that fluids are low, preventing engine damage
- **Platinum-tip spark plugs** (first scheduled maintenance at 100,000 miles*) that provide dependable service
- **Extended-life engine coolant** (first scheduled replacement at 5 years or 150,000 miles*) that helps make maintenance easy.

*Maintenance needs vary with different uses and driving conditions.



ENGINES (contd)



3800 Series II V6 Engine (L36)

Named among the top 10 best engines by *Ward's Auto World* for the third consecutive year in 1997, the 90-degree 3800 Series II V6 engine is a newcomer to the Monte Carlo line. Standard on Z34, it offers a level of power many wouldn't expect from a midsize coupe — 200 horsepower at 5200 rpm and 225 lb.-ft. of torque at 4000 rpm.

A great balance between performance and fuel economy is what owners will get with the 3800, along with many other benefits, such as:

- A **proven overhead valve (OHV) design**, which provides plenty of low-speed and mid-range torque for maneuvering in heavy traffic situations
- A **broad torque band** for powerful acceleration, which is usually desired during stop-and-go driving
- A high-performance **pushrod valvetrain** that allows the Series II engine to rev to 6000 rpm, giving it **more maximum rpm range** than many competitive pushrod engines and making it competitive with multi-valve overhead cam (OHC) designs
- **Fewer parts than an overhead cam engine** with lighter-weight valves, springs and spring caps, contributing to increased mechanical stiffness and allowing high maximum rpm capacity and impressive horsepower
- **Sequential Fuel Injection (SFI)**, which delivers exact amounts of fuel through injectors at each cylinder, providing maximum fuel efficiency, quick start-ups in all weather conditions and smooth acceleration (page 10)
- **On-Board Diagnostics Second Generation (OBD II)** that is combined with the **Powertrain Control Module (PCM)** to monitor fuel delivery, ignition timing and the emissions system, detecting deterioration or malfunction (page 9)
- **Dual Electronic Spark Control (ESC) sensors**, which detect "knock" in all cylinders and drive the PCM coolant and instrument panel gauges for greater precision
- **Symmetrical ports and combustion chambers** that provide uniform combustion in all cylinders for smooth engine performance
- **Refined air management** with a glass-reinforced nylon composite intake manifold and air induction system, which provides a linear acceleration curve for even performance throughout the driving range
- **Direct accessory mounting** of the power steering pump, alternator bracket and other brackets and tensioners, keeping engine noise and vibration to a minimum
- A **tuned-for-performance throttle body** that features a large inlet and progressive cam and cable linkages for maximum engine airflow and performance
- A **laminated oil pan**, which is designed with a special gasket, integrated baffle and rear crankshaft seal carrier to reduce noise, improve seals and eliminate plugs
- A **Change Oil Soon indicator** (page 4)
- Easy and clean oil servicing with convenient under-the-hood access and **extended oil-filling cap**, which eliminates the need for a funnel
- A **quiet exhaust system**, thanks to a cast-iron left manifold, insulated cross-over pipe and air gap take-down pipe
- **Platinum-tip spark plugs** (first scheduled maintenance at 100,000 miles*) that provide dependable service

Monte Carlo Places In The Winner's Circle

Pacing a race is no small job. Pace cars need the cooling capacity to handle track temperatures; instant throttle response; a broad torque curve to accelerate from the pits to near-racing speeds; and a suspension that grabs the road. The Monte Carlo Pace Car has it all.

The 1997 NASCAR season marked the second appearance of a Monte Carlo Pace Car at the Brickyard 400®, but its first appearance with the 3800 Series II V6 SFI engine.

The 3800 was the most significant modification to the stock Monte Carlo. It was chosen for this task because it had the power needed for the event and a distinguished history powering some of GM's luxury and sporty models.

The 3800 proved to be the right choice. For starters, its pushrod design was a perfect fit for NASCAR — pushrod engines power all of the race-modified stock cars. And, it featured a significant piston displacement upgrade over the standard engine, a low-restriction exhaust and modified cold-air pump, allowing it to crank out 235 horsepower. Although this figure is beyond the 200-horsepower found on the production 1998 Monte Carlo Z34, both production and Pace Car 3800 have a broad, flat torque curve. So, tap the gas and there's no waiting for the tach needle to jump.

The 3800 is just one example of how Chevrolet engineers take what they've learned on the racetrack and transfer it to the Monte Carlos we drive.



Monte Carlo Owners See Orange — And Love It

Extended-life coolant, good for 5 years or 150,000 miles,* is standard on all Chevy models. This special coolant is silicone-free, and should increase water pump life and improve corrosion protection for aluminum engine components. It is readily differentiated from its predecessor (green color) by its bright orange color. The two should never be mixed, as coolant life will be shortened.

*Maintenance needs vary with different uses and driving conditions.

“What?!? I Haven’t Changed My Oil For How Many Miles?”

Monte Carlo owners may never have to say those words to a service technician. That’s because all models are equipped with a Change Oil Soon indicator.

The indicator illuminates when the engine is started. But, if the light stays on for 20 seconds or more, it’s time to change the oil.

Of course, when to change the engine oil also depends on driving habits and conditions, but the system monitors that, too. So, the light may come on as early as 2,000 miles or less.

And, once the oil is changed, owners simply have to reset the system.

ENGINES (contd)

- **Extended-life engine coolant** (first scheduled replacement at 5 years or 150,000 miles*) that helps make maintenance easy.

*Maintenance needs vary with different uses and driving conditions.

ON-BOARD DIAGNOSTICS SECOND GENERATION (OBD II)

On-board diagnostics for Monte Carlo is highly sophisticated, thanks to On-Board Diagnostics Second Generation (OBD II).

- **The system can mean faster service and repairs for consumers** by taking better engine diagnosis before major problems develop. For example, low-level engine misfire, bad fuel, improper maintenance, cracked spark plug insulation or plugged fuel injectors can all lead to a misfire diagnosis — and those are detected by OBD II.
- **OBD II functions by using a Powertrain Control Module (PCM)** to monitor fuel delivery, ignition timing and the emissions system, detecting deterioration or malfunction.
- If a problem is detected, a **Diagnostic Trouble Code (DTC)** is stored and indicates the type of fault detected.
- **The PCM alerts the driver** by illuminating the “Service Engine Soon” light when a deterioration in the performance of any of the monitored components is detected.
- The **PCM stores and retrieves diagnostic messages** to help technicians fix problems quickly and accurately.
- **Unlike first-generation systems** that signaled only system failures, OBD II alerts the driver to have the vehicle serviced before experiencing a possible breakdown or incurring more expensive repairs.

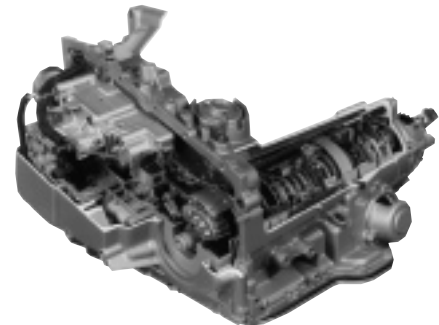
SEQUENTIAL FUEL INJECTION (SFI)

Sequential Fuel Injection, standard on all 1998 Monte Carlo engines, is a far cry

from traditional fuel control systems such as Electronic Fuel Injection. SFI optimizes fuel economy, power output and the ability to meet today’s stringent emissions control requirements.

- SFI’s secret is its **high-precision fuel control**, which uses one injector and nozzle per cylinder for optimum cylinder-to-cylinder fuel distribution.
- **Each injector is fired sequentially** and timed to the intake cycle for accuracy and metering control. (With non-SFI engines, fuel is injected twice per engine revolution through all injectors at the same time. With SFI, timing is much more precise, thus, performance improves across the board).
- A **mass airflow meter** constantly measures the engine’s air requirements under varying conditions, such as changes in load, altitude and temperature. In an SFI system, the mass airflow meter is essential for accurate fuel delivery.
- The **injector nozzle’s** design and optimum location produce an effective spray pattern that contributes to the engine’s smooth idle and outstanding fuel efficiency.

TRANSMISSIONS



4T60-E 4-Speed Automatic Overdrive Transmission

The 4T60-E 4-speed electronically controlled automatic transmission has a wide range of gear ratios, enhancing performance and fuel economy on Monte Carlo LS models.



TRANSMISSIONS (contd)

Operation of the 4T60-E transmission is synchronized and integrated with the performance of the 3100 V6 engine, all through the Powertrain Control Module (PCM). The synchronized operation produces outstanding shift quality. Shifts are so smooth, drivers may be unaware of the unit's operation. The PCM also monitors environmental factors, such as altitude and temperature, to create a seamless link between engine, transmission and vehicle.

4T60-E Other Features Include:

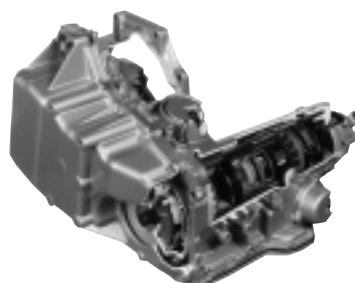


- An **electronically controlled converter clutch (EC³)** that replaces the mechanical engagement clutch torque

converter with an electronically controlled version, which varies the clutch capacity. Benefits include improved driveability and increased fuel economy

- A **2.92:1 first-gear ratio**, which provides high torque multiplication for initial acceleration
- A **.70:1 fourth-gear Overdrive**, which reduces wear and engine rpm at cruising speeds, helping increase fuel economy
- A **temperature sensor**, which allows the transmission to compensate for severe operating conditions such as trailer towing or climbing steep grades
- A **cast-aluminum side cover**, which provides extra structural rigidity, superior sealing, heat dissipation and low noise and vibration
- **Extended-life automatic transmission fluid** — 4T60-E's fluid is factory-filled and never needs replacement under normal operating conditions.* (This has an important environmental impact as well, since people will dispose of less transmission fluid)
- The elimination of the **transmission fluid dipstick**, since no maintenance is required.

*Maintenance needs vary with different uses and driving conditions.



4T65-E 4-Speed Automatic Overdrive Transmission

The 4T65-E 4-speed electronically controlled automatic transmission is standard in Monte Carlo Z34 models as it is teamed with the 3800 Series II V6 engine. Since the 4T65-E is designed to handle high performance levels, it has some special features in addition to the features on the 4T60-E, including:

- A **dual-phase sprocket** that drives two half-width chains, which rotate 180 degrees out of phase, causing the sound waves generated by each chain to "run into" one another. In effect, much of the gear noise is canceled out
- A family of **electronic controls** to:
 - Protect against over-revving the engine in low-range gears
 - Monitor changes in driving conditions and adjust shift quality, when necessary, for overall smooth shifting.

SUSPENSION

All Monte Carlo LS models feature a standard Soft-Ride four-wheel independent suspension that's specially tuned to provide a comfortable ride, plus responsive and predictable handling. The suspension also is tuned to maximize the tight, solid body structure.

This four-wheel independent suspension features:



- A **32mm front stabilizer bar** (2mm larger than its predecessor) and 20mm rear stabilizer bar to reduce vehicle body lean, while turning

Monte Carlo — A Winner On The Racetrack And In The Showroom

The Chevrolet Monte Carlo is the retail sales leader in the midsize coupe segment. 1996 and 1997 marked the best sales years for Monte Carlo since its reintroduction in 1995. And, Chevrolet expects sales to continue roaring ahead as Monte Carlo is revving up for another competitive year — this time without the Ford Thunderbird.

Since Ford discontinued the T-Bird for 1998, Monte Carlo looks forward to some head-to-head street competition with the Chrysler Sebring and Dodge Avenger.

On the racetrack, Monte Carlo anticipates holding its reign as the winningest car in NASCAR Winston Cup history. Helping achieve that honor are winning drivers like Terry Labonte, Jeff Gordon and Dale Earnhardt; plus newcomers like Robby Gordon, Mike Skinner and David Green. With such talent behind the wheel, Chevrolet hopes to have more one, two and three finishes as in the 1997 Daytona 500, helping earn another NASCAR Winston Driver's Championship, Winston Cup Manufacturer's Cup and Driver's and Manufacturer's Championships in the NASCAR Busch Grand National Series.

Chevrolet Monte Carlo — a proven winner on the racetrack and the street.



1998 Monte Carlo

Monte Carlo History (By Model Year)

- Introduced in September 1969 as a 1970 model.
- **1970** — 454 cu. in., 360-hp SS 454 introduced.
 - **1973** — Second-generation Monte Carlo design debuted; “S” and “Landau” packages added.
 - **1976** — Restyled front end; 454 cu. in. V8 discontinued.
 - **1978** — Third-generation Monte Carlo introduced; first V6 became available.
 - **1980** — Turbocharged 3.8L, 170-hp V6 introduced.
 - **1981** — New exterior design; Computer Command Control introduced.
 - **1982** — Diesel V6 and V8 debut. Turbo V6 and Landau discontinued.
 - **1983** — SS model debuted.
 - **1986** — SS Aero Coupe and Luxury Sport models debuted.
 - **1988** — Monte Carlo discontinued mid-year.
 - **1995** — Fourth-generation Monte Carlo introduced.
 - **1996** — Driver and front-passenger temperature controls, 4-wheel disc brakes (Z34), extended-life coolant, platinum-tip spark plugs and extended-life automatic transmission fluid debuted.
 - **1997** — Power sunroof, Daytime Running Lamps and Change Oil Soon indicator introduced.

SUSPENSION (contd)

- **MacPherson struts** with specially tuned deflected disc shock valving, at all four corners, for a smooth ride
- **Variable-rate coil springs**, which help maintain comfortable and smooth ride characteristics, regardless of load.

For a more performance-oriented feel, Monte Carlo Z34 has a Ride and Handling Suspension. Since this suspension is designed to handle high-performance driving characteristics with the 3800 Series II V6 engine, it has some special features, including:



- **4-stage valving** in the front struts, which allow a finer degree of ride control over a wider range of suspension movement
- **34mm front and 22mm rear stabilizer bars**, which further reduce vehicle body lean, while cornering.

STEERING

For precise control under demanding driving conditions, power-assisted rack-and-pinion steering is standard on all Monte Carlo models. This system provides a:

- **16.1:1 ratio** for quick steering response
- **Steering rack** that is mounted on the front suspension cradle to provide a solid feel while adding more isolation from road disturbances, compared to steering racks mounted directly to the car body.

BRAKES

All Monte Carlo LS models have front disc/rear drum brakes with standard power assist. And, Z34 models have standard power four-wheel disc brakes.

GM's award-winning ABS VI four-wheel anti-lock brake system is standard with both braking systems. But, there are some things to keep in mind about ABS, such as:

- Anti-lock brakes help maintain steering control during severe braking situations

and minimize wheel lockup on most slippery surfaces

- The system modulates brake-line pressure at each wheel. ABS can adjust brake pressure and pump the brakes automatically at a rate of up to 18 times per second — a rate even the most skilled professional drivers cannot attain
- Drivers should not “pump” the brakes in emergency braking situations. Rather, they should maintain constant and firm pressure on the brake pedal, while steering, allowing the system to work.

WHEELS AND TIRES

Monte Carlo LS:



- Standard 15" deluxe bolt-on wheel cover and P205/70R-15 blackwall Touring tires.

Monte Carlo LS:



- Optional 16" sporty aluminum wheel with chrome bowtie requires P225/60R-16 blackwall Touring

tires. (Wheels also available in white with Bright White exterior.)



Monte Carlo Z34:

- New standard 16" machine-faced aluminum wheel with red bowtie and P225/60R-16 blackwall Goodyear Eagle RS-A tires.



GENUINE CUSTOMER CARE

Chevrolet owners are covered by Genuine Customer Care, a comprehensive owner protection plan that includes the following:



Bumper to Bumper Warranty

The GM 3-year/36,000-mile (whichever comes first), no-deductible, limited warranty covers repairs for all Chevrolet cars, including labor and parts, to correct any defects in material or workmanship occurring during the warranty period. Warranty features include air conditioning repair, tires, towing, no-cost warranty transfer and 6-year/100,000-mile (whichever comes first) sheet-metal rust-through protection. There also is emissions control system coverage, which varies by geographic location. The only item not covered by the warranty is normal maintenance.



Courtesy Transportation

Customers who purchase or lease a 1998 Monte Carlo are eligible for Courtesy Transportation when their vehicles are left at a participating dealership for repairs covered under the 3-year/36,000 mile Bumper to Bumper limited warranty. Courtesy Transportation, at participating dealers only, may include shuttle service, expense reimbursement, or, if the repairs require leaving the vehicle overnight, a vehicle rental. See your dealer for details.



24-Hour Roadside Assistance

Lost? We'll help find the way. Locked out? We'll get owners back in their Monte Carlo. Out of gas? We'll get gas for owners. Roadside Assistance is provided via a toll-free number 24 hours a day, 365 days a year. Roadside Assistance is offered in two levels of service, Basic Care and Courtesy Care.

Roadside Basic Care covers owners as long as they own their Monte Carlo and provides:

- Free towing for warranty repairs (to closest dealer)
- Over-the-phone basic technical advice
- Available dealer services at reasonable costs (i.e., wrecker services, locksmith/key service, glass repair, etc.).

Roadside Courtesy Care is available to owners for a period of three years or 36,000 miles (whichever comes first) and provides:

- Free towing (to closest dealer)
- Free locksmith/key service (when keys are lost on the road or locked inside)
- Free flat-tire service, jump start and fuel delivery.

Important — a word about this document: We have tried to make this document as comprehensive and factual as possible. We reserve the right, however, to make changes at any time, without notice, in colors, materials, equipment, specifications, models and availability. Some information may have been updated since the time of printing in June 1997.

A note about air bags: Always wear safety belts, even with air bags.

General Motors, GM, the GM Emblem, Chevrolet, the Chevrolet Emblem, Monte Carlo, Lumina, GMAC, PASS-Key, Solar-Ray, TheftLock and Z34 are registered trademarks; Chevy is a trademark and OnStar is a service mark of the General Motors Corporation. Scotchgard is a trademark of the 3M Corp. © 1997 General Motors Corporation. All rights reserved.

Some artwork contained within this text is for representation purposes only.°

GM Mobility Program

Chevrolet recognizes the importance of mobility to everyone's life and, therefore, offers financial assistance to persons with disabilities through the General Motors Mobility Program. This program provides financial assistance — as much as \$1,000 — toward the cost of any aftermarket adaptive equipment for drivers or passengers and/or vehicle "alerting devices" for deaf and hearing-impaired drivers. A special feature of the program is single-transaction GMAC financing for the vehicle and its adaptive aids. Further details are available by calling the GM Mobility Assistance Center at 1-800-323-9935. The hearing-impaired can call the Customer Assistance Center at 1-800-TDD-CHEV.

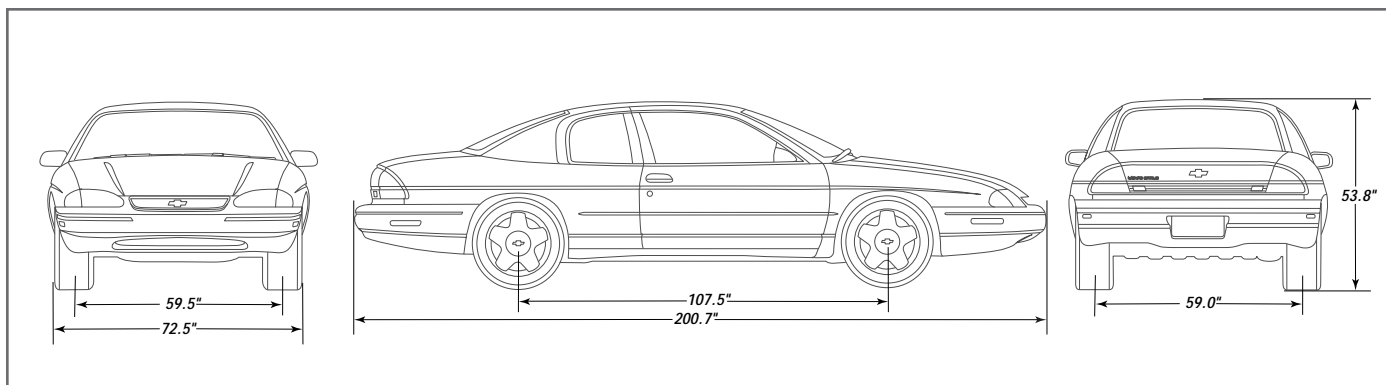


1998 Monte Carlo Feature Availability

| | Monte Carlo LS Coupe | Monte Carlo Z34 Coupe |
|--|-------------------------|--------------------------|
| INTERIOR | | |
| Air Bag – Driver and Front-Passenger | S | S |
| Air Conditioning – with CFC-Free Refrigerant | S | S |
| Convenience Net – Luggage-Area | O ¹ | S |
| Cup Holders – Instrument Panel (60/40 Seats) | S | NA |
| – Center Console (Bucket Seats) | O | S |
| Defogger(s) – Rear-Window | O | O |
| – Side-Window | S | S |
| Door Locks – Power | S | S |
| Floor Mats – Carpeted, Front and Rear | S | S |
| Gauges – Tachometer and Odometer | S | S |
| Lights, Interior – Theatre Lighting | S | S |
| Low Engine Coolant Level Monitor Light | S | S |
| Low Engine Oil Level and Wear Indicator Monitors | S | S |
| OnStar Mobile Communications System – Dealer Installed | O | O |
| PASS-Key II Theft-Deterrent System | S | S |
| Scotchgard™ Protector | S | S |
| Seats – 6-Way Power Driver | O | O |
| – 60/40 Custom Cloth, Front | S | NA |
| – Custom Cloth Bucket, Front | O | S |
| – Leather Accent Bucket, Front | O | O |
| – Split-Folding, Rear | S | S |
| Speed Control – Electronic with Resume Speed | O | S |
| Steering Column – Tilt-Wheel™ Adjustable | S | S |
| Steering Wheel with Radio Controls – Leather-Wrapped | O ¹ | S |
| Stereo – AM/FM with Cassette Player | S | S |
| – AM/FM with CD Player | O | O |
| Sunroof – Electric | O | O |
| Temperature Controls – Driver and Front-Passenger | O ¹ | S |
| Trunk – Power Opener | O ¹ | S |
| Visor Mirrors – LH and Illuminated RH Vanity | S | S |
| Windows – Power with Driver's Express-Down Feature | S | S |
| Wipers – Intermittent Variable | S | S |
| EXTERIOR | | |
| Daytime Running Lamps with Automatic Exterior Lamp Control | S | S |
| Exhaust System – Stainless-Steel (dual tailpipes on Z34) | S | S |
| Mirrors – Outside Dual Body-Color Twin Remote Electric | S | S |
| Moldings – Body-Color, Body-Side | S | S |
| Paint – Basecoat/Clearcoat | S | S |
| Tires – P205/70R-15 Blackwall Touring | S | NA |
| – P225/60R-16 Blackwall Touring | O ² | NA |
| – P225/60R-16 Blackwall Goodyear Eagle RS-A | NA | S |
| Wheel Covers – 15" Bolt-On | S | NA |
| Wheels – 16" Sporty Aluminum | O ³ | NA |
| Wheels – 16" Machine-Faced Aluminum | NA | S |
| FUNCTIONAL | | |
| Brakes – 4-Wheel Anti-Lock | S | S |
| – Power, Front Disc/Rear Drum | S | NA |
| – Power, Front/Rear Disc | NA | S |
| Engine – 3100 V6 SFI | S | NA |
| – 3800 Series II V6 SFI | NA | S |
| Fuel Tank – 16.6-Gallon Capacity | S | S |
| Remote Keyless Entry | O ¹ | S |
| Suspension – 4-Wheel Independent | S | S |
| – Ride and Handling | NA | S |
| Transmission – 4-Speed Electronically Controlled Automatic | S ⁴ | S ⁵ |

S – Standard. O – Optional (some options may be available only as part of a Preferred Equipment Group; see the dealer order guide for feature availability). NA – Not Available. 1 Requires optional PEG 1SH. 2 Requires optional 16" sporty aluminum wheels. 3 Requires optional P225/60R-16 Touring tires. 4 4T60-E transmission. 5 4T65-E transmission.

1998 Monte Carlo Specifications



MODEL AVAILABILITY

Monte Carlo LS and Monte Carlo Z34

EPA vehicle class

Midsized

Assembly

Oshawa, Ontario, Canada

DIMENSIONS & CAPACITIES (inches, unless otherwise noted)

Exterior Dimensions

| | |
|------------------|-------|
| Wheelbase | 107.5 |
| Length (overall) | 200.7 |
| Width (overall) | 72.5 |
| Height (overall) | 53.8 |
| Tread — front | 59.5 |
| Tread — rear | 59.0 |

Interior Front Dimensions

| | |
|---------------|------|
| Headroom | 37.9 |
| Legroom | 42.4 |
| Shoulder room | 57.5 |
| Hip room | 53.4 |

Interior Rear Dimensions

| | |
|---------------|------|
| Headroom | 36.9 |
| Legroom | 34.9 |
| Shoulder room | 57.6 |
| Hip room | 51.6 |

Capacities

| | | |
|------------------------------|-------------------------------|----------------|
| Passenger capacity | 6 (5 with front bucket seats) | |
| Passenger index (cu. ft.) | 96.1 | |
| Cargo index (cu. ft.) | 15.5 | |
| Fuel tank capacity (gal.) | 16.6 | |
| EPA interior index (cu. ft.) | 111.6 | |
| Curb weight (lbs., est.) | 3239 (LS) / 3452 (Z34) | |
| Engine oil (quarts) | 4.0 | |
| Engine coolant (quarts) | 12.2 (3100 V6) | 11.7 (3800 V6) |



1998 Monte Carlo Specifications

STEERING

| | | |
|-------------------------------------|--------------------------|------------|
| Type | Power Rack-and-Pinion | |
| Ratio (overall) | 16.1:1 | |
| Turns stop-to-stop | 2.60/2.26 With 16" Tires | |
| Turning diameter curb-to-curb (ft.) | 36.7 (LS) | 39.0 (Z34) |
| Turning diameter wall-to-wall (ft.) | 42.4 (LS) | 44.6 (Z34) |

BRAKES

| | | |
|--|---|--|
| Type | 4-Wheel ABS, Power Front Disc/Rear Drum standard on LS (Power 4-Wheel Disc standard on Z34) | |
| Gross lining, front/rear (sq. in.) | 26.0/60.4 (18.0 with Z34 disc) | |
| Front disc rotor outer diam. x thickness (in.) | 10.5 x 1.0 | |
| Rear drum/rear disc diam. x width (in.) | 8.86 x 1.77 (drum)/10.9 x .43 (Z34 disc) | |
| Total swept area, front/rear (sq. in.) | 169.1/197.2 (143.6 with Z34 disc) | |

ENGINES

| Model | LS | Z34 |
|-------------------------------|------------------------|------------------------|
| Type | 3100 SFI V6 | 3800 Series II V6 SFI |
| Block | Cast Iron | Cast Iron |
| Cylinder head | Cast Aluminum | Cast Iron |
| Hydraulic lifters | Yes/Roller | Yes/Roller |
| Bore & Stroke (in.) | 3.51 x 3.31 | 3.80 x 3.40 |
| (mm) | 89.00 x 84.00 | 96.52 x 86.36 |
| Cam drive | Chain | Chain |
| Redline (rpm) | 6000 | 6000 |
| Displacement (liters/CID) | 3.1/191 | 3.8/231 |
| Compression ratio | 9.6:1 | 9.4:1 |
| Fuel induction | SFI | SFI |
| Horsepower @ engine rpm | 160 @ 5200 | 200 @ 5200 |
| Torque (lb.-ft.) | 185 @ 4000 | 225 @ 4000 |
| Exhaust system | Stainless Steel | Stainless Steel |
| Tailpipe(s) | Single | Dual |
| Ignition system | Direct Ignition System | Direct Ignition System |
| Delcotron alternator rating | 105amp | 105amp |
| Battery (SAE capacity rating) | 600cca | 690cca |
| Recommend fuel (unleaded) | 87 Octane | 87 Octane |

TRANSMISSIONS

| | |
|--------------------|---------------------------------------|
| Model | 4-Speed Automatic (4T60-E and 4T65-E) |
| Engine | 3100 V6 or 3800 Series II V6 |
| Type | FWD |
| Layout | Transverse |
| Gear ratios: | |
| 1st | 2.92 |
| 2nd | 1.57 |
| 3rd | 1.00 |
| 4th | 0.70 |
| 5th | -- |
| Reverse | 2.38 |
| Final-drive ratios | 3.29 |

1998 Monte Carlo Specifications



CHASSIS

Chassis

| | |
|------------------------------|--|
| Structure/frame | Unitized Body Frame |
| Body material | Steel |
| Suspension — Front | |
| Type | Independent MacPherson Strut with Coil Springs and Stabilizer Bar, One-piece "A" arms |
| Stabilizer bar/diameter (mm) | Linkless/32 (34 on Z34) |
| Suspension — Rear | |
| Type | Independent MacPherson Strut with Coil Spring and Stabilizer Bar, Lateral Links Attached To Body Cross Member, Trailing Arms |
| Stabilizer bar/diameter (mm) | Link/20 (22 on Z34) |

MILEAGE/PERFORMANCE

| Type | 3100 V6 SFI* | 3800 Series II V6 SFI† |
|----------------------|--------------|------------------------|
| Mileage: | | |
| City | 20 | 19 |
| Highway | 29 | 30 |
| Combined | 23 | 23 |
| Est. Cruising Range: | | |
| City | 332 | 315 |
| Highway | 481 | 498 |
| Combined | 382 | 382 |

*Based on 1997 EPA figures. 1998 figures not available at time of printing. † Based on preliminary 1998 information.

TRAILERING INFORMATION

| | |
|------------------------------------|-------|
| Trailer classification | Light |
| Gross trailer weight (lbs., up to) | 1000 |
| Max tongue load (lbs.) | 100 |

WHEELS & TIRES

| | |
|----------------------|--|
| Wheel type/size | Steel 15" x 6" (LS)/Aluminum 16" x 6.5" (optional on LS/standard on Z34) |
| Tire type | All-Season Steel-Belted Radial-Ply Blackwalls |
| Tire size (standard) | P205/70R-15 (LS)/P225/60R-16 (optional on LS/standard on Z34) |
| Spare size | T125/70D-15 |

All specifications are preliminary and subject to change. General Motors Corporation, June 1997.